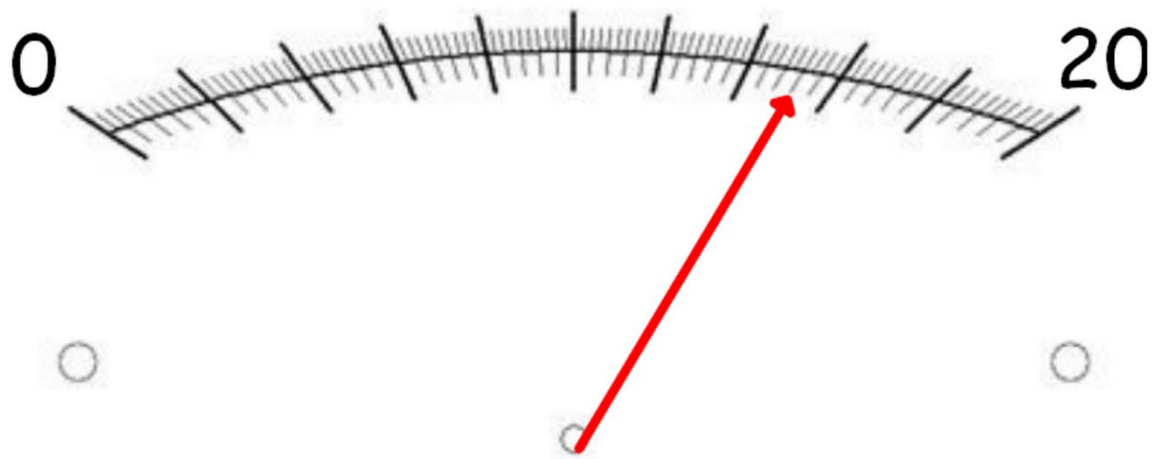


What does the pointer show?



A: 7.5

B: 14

C: 15

Page 1

What is 3247 to the nearest 100?

A: 3200

B: 3300

C: 3000

Page 2

What 3 subtract 7?

A: 4

B: -4

C: -3

Page 3

1 cm = mm

A: 10

B: 1000

C: 100

Page 4

What is the difference between -6 and 2?

A: 10

B: 8

C: -4

Page 5

What symbol should go between these numbers?

45

75

A: <

B: >

C: =

Page 6

What symbol should go between these numbers?

$$\frac{8}{40} \qquad \frac{1}{5}$$

A: <

B: >

C: =

Page 7

These numbers are in order, what should go in the gap?

3, 3.02, 3.2, _____, 3.3

A: 3.25

B: 3.4

C: 3.03

Page 8

$$1\text{kg} = \quad \text{g}$$

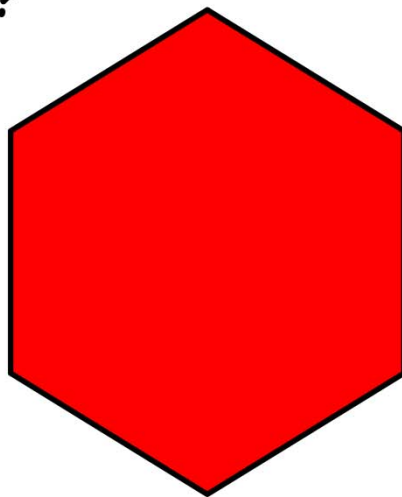
A:100

B:1

C:1000

Page 9

Which is False?



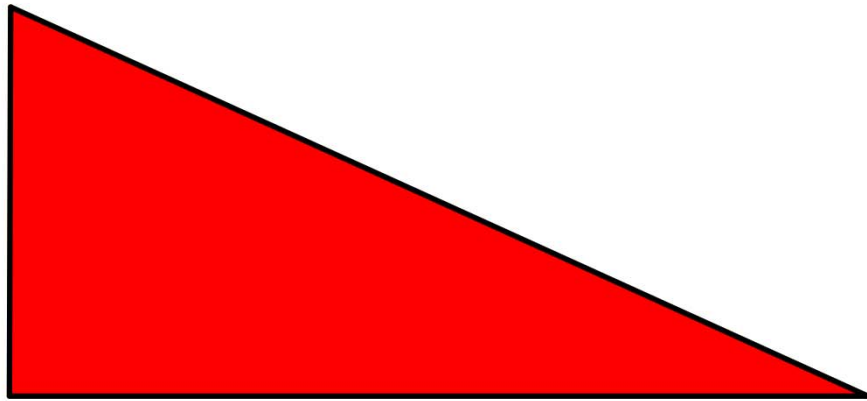
A: All angles are the same

B: Irregular

C: All sides are the same

Page 10

Which is False?



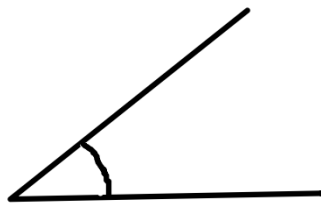
A: There is one right angle

B: It is irregular

C: It is an isosceles triangle

Page 11

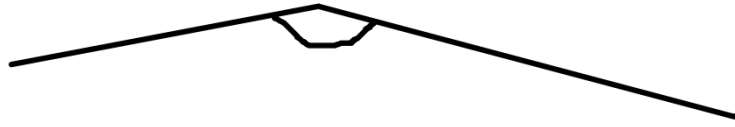
What is the name of this angle?



A: Acute B: Obtuse C: Reflex

Page 12

Which of these is true?



- A: It is less than 90 degrees
- B: It is between 90 and 180
- C: It is greater than 90

Page 13

What does perimeter mean?

- A: The space of the shape
- B: The distance around a shape
- C: It has right angles

Page 14

How do you find the area?

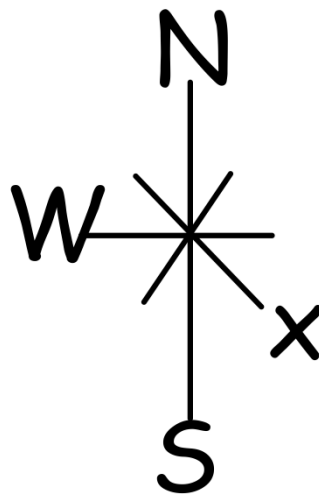
A: Count the angles

B: Add all the sides together

C: Times the length by width

Page 15

What is x?



A: WS

B: W

C: SW

Page 16

Which one is false?



- A Triangle at both ends
- B It is a prism
- C It has 7 verticies

Page 17

$$10 \text{ mm} = \quad \text{cm}$$

A:100

B:1

C:1000

Page 18

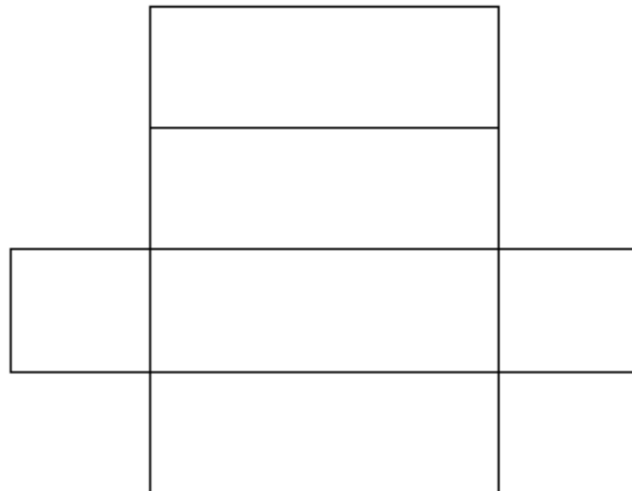
Which one is false?



- A It has a square base
- B It is a pyramid
- C It has 7 edges

Page 19

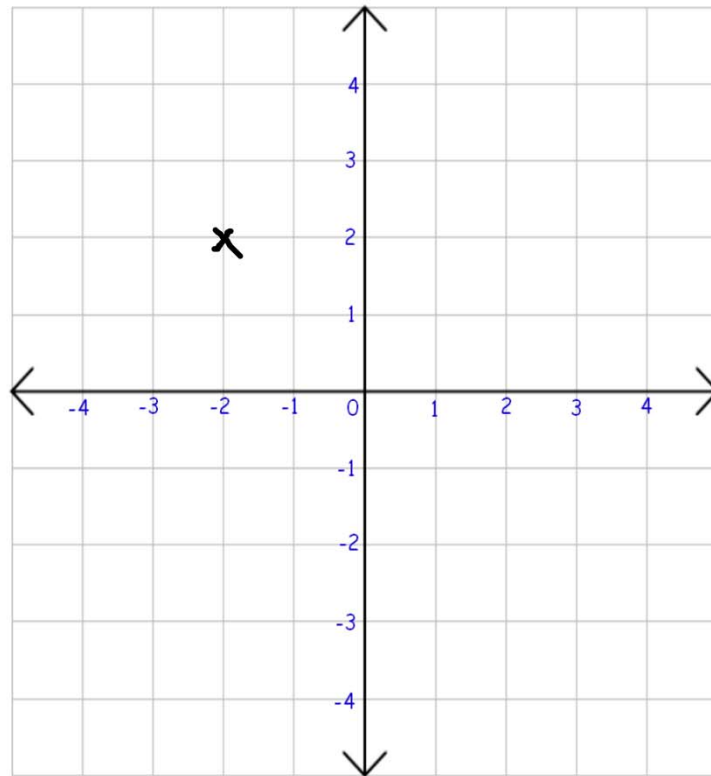
Which one is false?



- A This is a net
- B It will make a cube
- C It is also a prism

Page 20

What are the coordinates of x ?



A: (-2, 2) B: (2, 2) C: (2, -2)

Page 21

Which of these is a multiple of 6?

A: 36

B: 3

C: 35

Page 22

Which of these is a factor of 8?

A:16

B:4

C:3

Page 23

1 l = ml

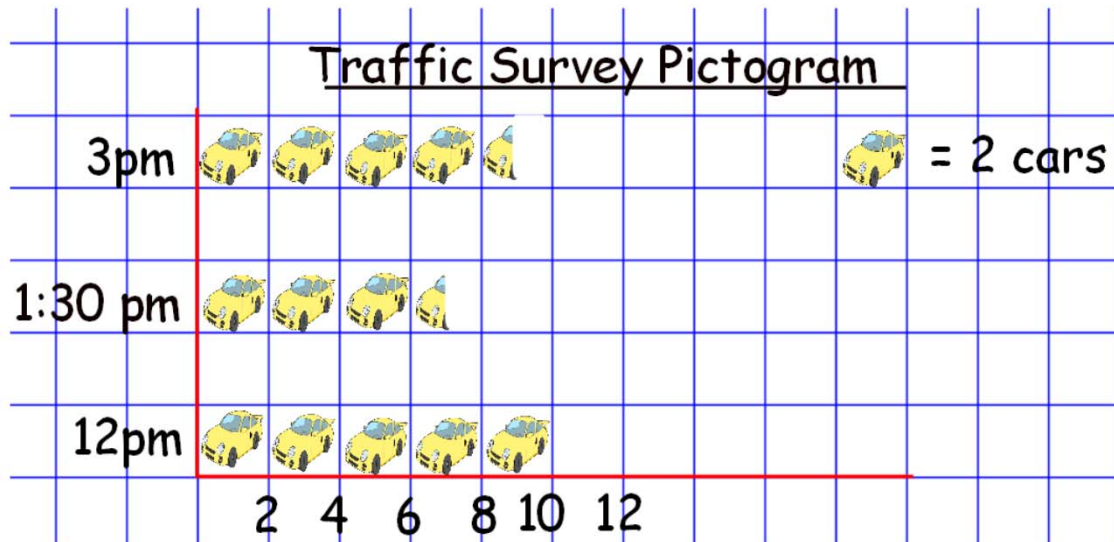
A:10

B:1000

C:100

Page 24

How many cars at 12pm?



A:10

B:5

C:7

Page 25

What would you use to measure...



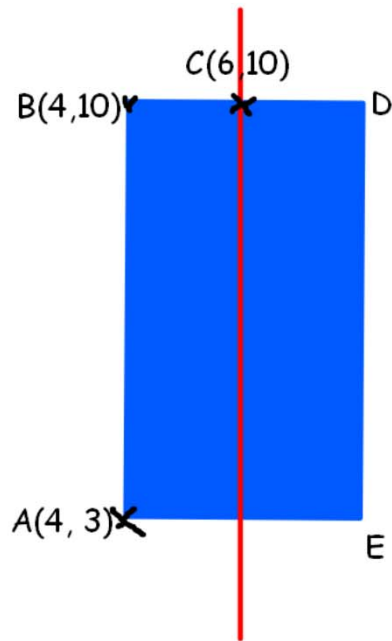
A:mm

B:cm

C:m

Page 26

What is D?



A:(4, 10) B:(8, 10) C:(10, 8)

Page 27

$$100 \text{ cm} = \quad \text{m}$$

A:100

B:1

C:1000

Page 28